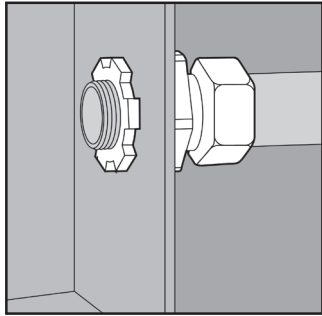
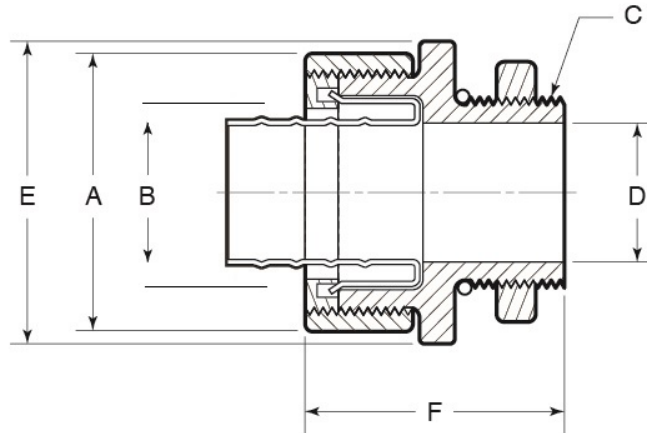


# STAINLESS STEEL STRAIGHT LIQUIDTIGHT CONNECTORS



## APPLICATION

- Designed for use with liquidtight conduit
- Provide a means of connecting to boxes in wet or dry locations
- Offered in three configurations: Straight, 45°, 90°
- Supplied complete with a Type 316 SS gland nut, polyethylene sealing ring, Type 316 SS ferrule, neoprene sealing gasket, and Type 316 SS locknut
- Type 316 SS inside ferrule provides extra corrosion resistance on inside of fitting (Other inside ferrules made of materials such as carbon steel may corrode easily, effecting the entire fitting.)
- Manufactured in stainless steel to help prevent corrosion
- Can be installed using ordinary hand tools and require little maintenance or repair
- Provided in a bright, polished finish that does not require touch up or painting



## PRODUCT DETAILS

### Material:

- Body: CF8M (316 SS)
- Locknut: 316 SS
- Sealing Gasket: Neoprene
- Inside Ferrule: 316 SS
- Sealing Ring: Polypropylene
- Gland Nut: 316 SS

### Standards:

ASTM A351, ASTM A240

### Country of Origin:

Manufactured in USA

Part Number	Conduit Size	Weight/100 (lbs.)	Dimension (in.)					
			A	B	C	D	E	F
LT50	½ in.	25	1.58	0.86	½-14 NPT	0.62	1.54	1.50
LT75	¾ in.	35	1.60	1.06	¾-14 NPT	0.78	1.71	1.67
LT100	1 in.	51	1.90	1.33	1-11-½ NPT	1.00	1.99	1.84

